

Eve lf280k grade a



Eve lf280k grade a



EVE LF280K V3 Grade A Cells (Pack of 4)

With an impressive 280Ah capacity and high energy efficiency, this battery is ideal for energy storage systems, electric vehicles (EVs), and off-grid power solutions, offering long cycle life and stable ...

USA Stock EVE LF280K 280Ah V3 8000cycles Grade A LiFePO4 ...

High capacity & Energy Density: Nominal capacity is 280Ah, tested fully load capacity is over 310Ah; Long cycle life: 8,000 cycles @80% SOC @ 25?, ensuring durability. Superior Safety: ...

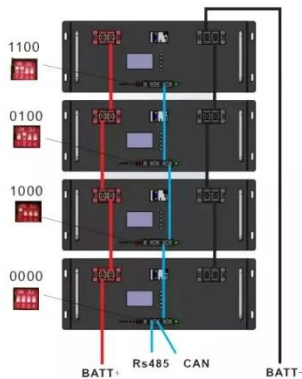


SunFunKits

EVE Lithium LF280K Version 3 are the best versions of the 280K cell line, these LiFePO4 prismatic cells that can be used in various applications from automotive, backup power, energy storage and other ...

EVE LF280K LiFePO4 3.2V 280Ah Grade A Cells

We EVE 280Ah battery is brand new and of Grade A quality. It comes with a QR code serial number and a factory inspection report that allows you to trace its origin.

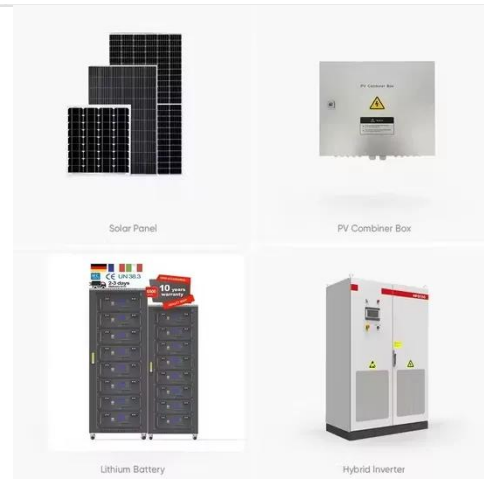


EVE LF280K V3 LiFePO4 3.2V 280Ah Lithium Grade A Battery Cell

The EVE LF280K V3 LiFePO4 280Ah battery is designed to meet the highest standards of quality, offering maximum energy density, long cycle life, and high charge/discharge rates, making it the ideal ...

USA Stock EVE LF280K 280Ah V3 8000cycles Grade A LiFePO4 ...

High capacity & Energy Density: Nominal capacity is 280Ah, tested fully load capacity is over 310Ah; Long cycle life: 8,000 cycles @80% SOC @ 25?, ensuring durability. Superior Safety: LiFePO4 ...



EVE LF280K LiFePO4 battery cells 3.2V 280Ah V3 Grade A

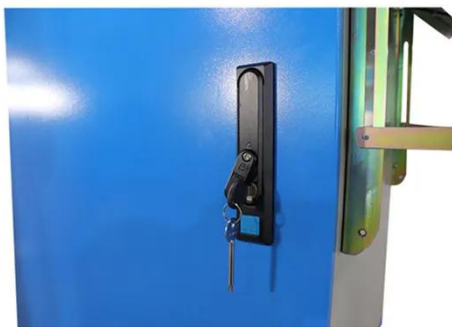
8000



EVE 3.2V LiFePO4 battery offers enhanced safety, long cycle life, high energy density, fast charging, wide temperature range tolerance, environmental friendliness, high power output, and maintenance ...

Cell Lifepo4 V3 3.2V 280Ah, Grade A Eve LF280K

Wistek EVE lf280k 3.2V 280AH Deep Cycle Lifepo4 Battery Cells with B Mark Lithium Battery, Perfect for Boat, RV, Golf Cart, Solar System, Fast Shipping.



EVE LF280K 3.2V 280Ah LiFePO4 Battery Cell

EVE Brand New Grade A LF280K 3.2 V 280ah LiFePO4 Battery Cell With 6000 life cycles and 2C discharge rate. Individual pricing for large scale projects and wholesale demands is available.

EV Grade A EVE 3.2V 280Ah Rechargeable LiFePO4 Battery Cell

Upgrade your energy storage with the EVE LF280K V3 280Ah 3.2V LiFePO4

battery cell, a premium Grade A prismatic lithium iron phosphate battery designed for high-capacity and long-cycle ...



(Pack of 4) EVE LF280K 280Ah 3.2V LiFePO4 Prismatic Battery

Featuring a nominal capacity of 280Ah and capable of a continuous 1C (280A) charge/discharge rate -- with short bursts up to 2C (560A) -- this cell is built for performance. It supports up to 6,000 life ...

Contact Us

For catalog requests, pricing, or partnerships, please visit:
<https://kidsandparents.pl>

